

# 16' Catalina Dual Temp



## ***C630 Portable***

90" x 190.5" x 54"

---

### **Capacity:**

2000 Gallons

### **Approximate Weight:**

2900 Dry      19,575 Filled

---

### **Spa Side Standard Features:**

Fixed See Through Divider  
Touchscreen Controls  
Blower  
Clear View H-500 Ozonator  
Underwater Lighting  
(2) Lit Crystal Water Spouts  
Lit Controls  
Lit Jets  
(8) Perimeter Lights  
(2) Cabinet Accent Lights  
Insulated Cover

---

### **Swim Side Standard Features:**

Touch Screen Topside Controls  
Auxiliary Topside Controls  
Bluetooth Digital Audio Package  
Clear View H-500 Ozonator  
Underwater Lighting  
(6) Lit Crystal Water Spouts  
Lit Controls  
Lit Jets  
(8) Side Lights  
(4) Step Lights  
(16) Perimeter Lights  
(2) 18" Crystal Waterfalls  
Blower in Body Massager  
Row Kit & Tension Bands  
(2) Stainless Exercise Rail  
Insulated Cover  
Ceramic Swim Lane Tile  
Ceramic Water Line Tile  
100 s/f Filter

### **Swim Side Configuration:**

- (3) River Jets
- (4) Pumps
- (15) Jet Body Massage
- 220V / 60 amp

### **Spa Side Configuration:**

- Seating for 4
- (20) Stainless Jets
- One Pump
- 220V / 50 amp

# Options & Upgrades



## Entertainment & Comfort

- Any Temp **Hot** & **Cold** Spa System
- Island Spa Mist System
- Wi-Fi

## Colors

- Glass Tile Inlay
- Synthawood® Cabinetry

## Equipment

- Variable Speed Pump Package

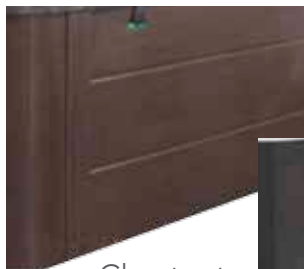
## Fitness

- Swim Pro Pole & Harness
- Underwater Cycle
- Underwater Treadmill

## Water Purification

- UV Sanitation System

## Synthawood® Cabinetry Upgrades:



Chestnut

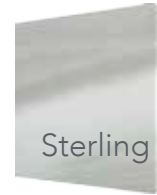


Graphite

## Acrylic Color Options:



Cameo



Sterling

## Cabinetry & Cover Color Options:

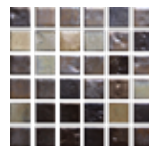


Gray

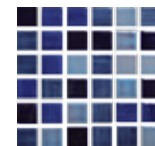


Mocha

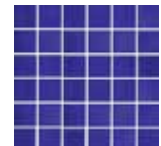
## Ceramic Tile Options:



Mayan  
Copper



Midnight  
Blue



Navy

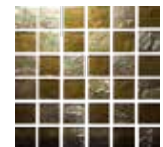
## Glass Tile Upgrades:



Aquamarine



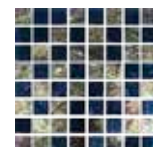
Arctic Blue



Bronze



Silverado



Steel Blue